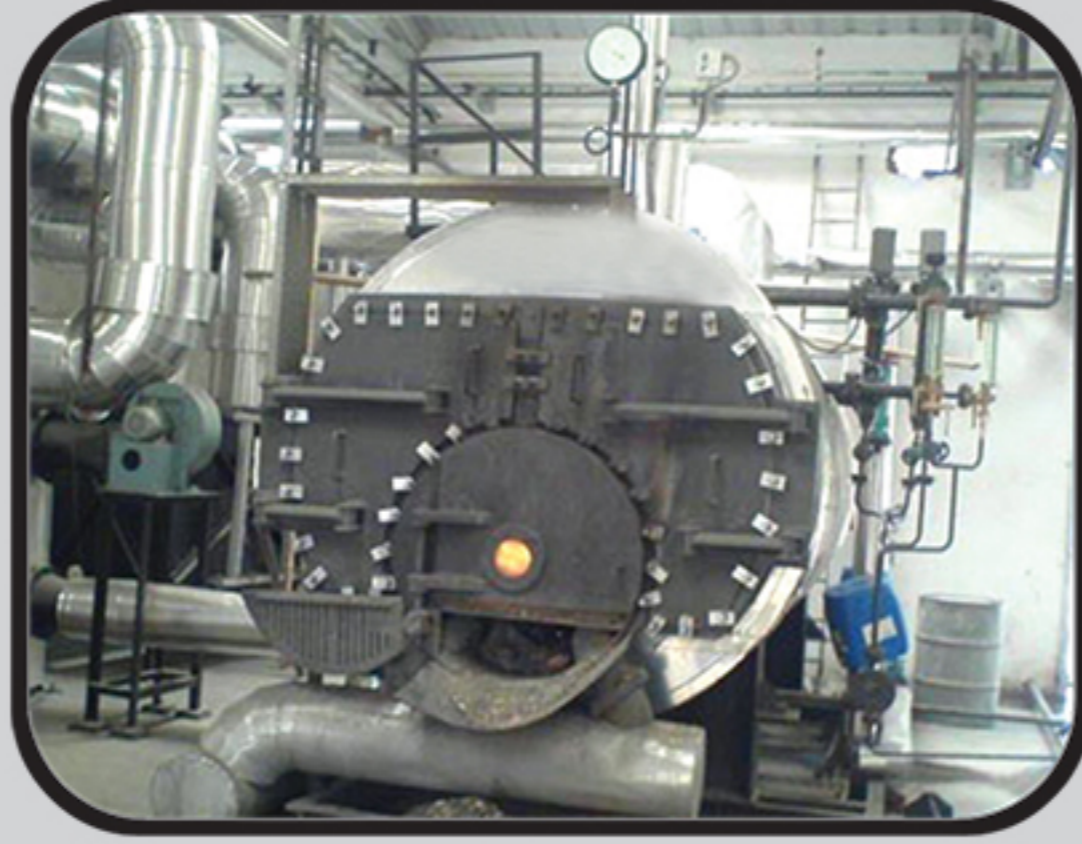


دیگ بخار زغال سنگ سوز



Model		C.B.B-1	C.B.B-2	C.B.B-3	C.B.B-4	C.B.B-5	
steam capacity	kg/h	1000	2000	3000	4000	5000	
	lb/h	2200	4400	6600	8800	11000	
	kw	625	1250	1850	2500	3100	
working pressure	bar	8-10	8-10	8-10	10	10	
	design pressure	bar	9-11	9-11	11	11	
	test pressure	bar	16.5	16.5	16.5	16.5	
total height	cm	200	230	250	260	270	
	total width	cm	200	225	250	260	280
	total length	cm	250	300	390	425	470
transport weight	kg	3600	5000	6800	9200	11000	
	service weight	kg	5100	7200	10200	15000	19000